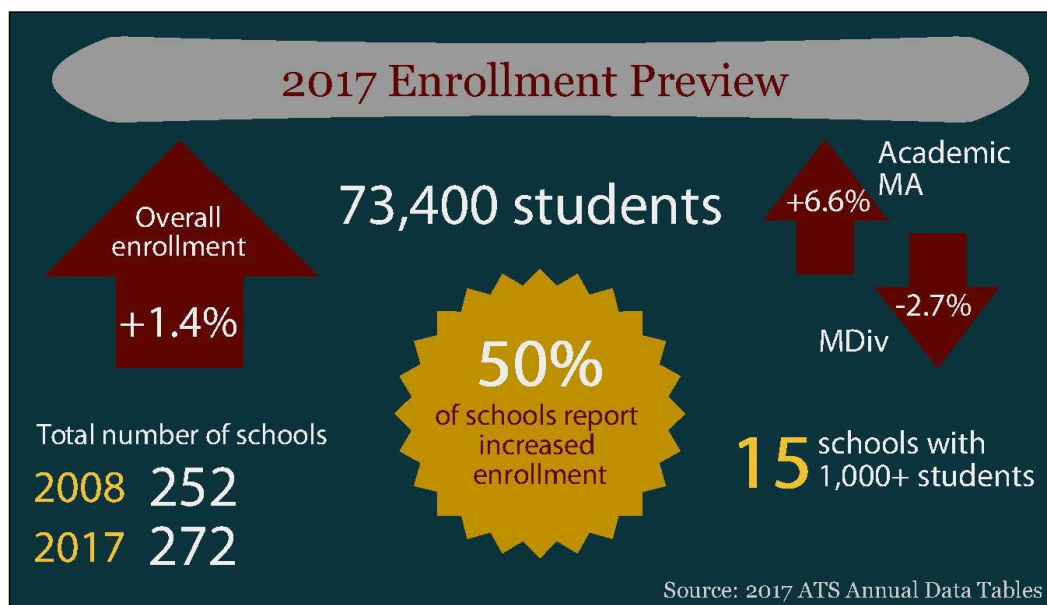


# A preview of 2017 enrollment data

By CHRIS MEINZER AND ELIZA SMITH BROWN



With the 2017 Annual Report Forms nearly complete, projections for enrollment reveal the fourth straight year of stability across the overall ATS membership. A slight uptick of 1.4% is estimated in total enrollment and is the net result of increases at half of the member schools and decreases at the other half. A more thorough analysis of enrollment trends will follow in subsequent months.

A look below the stable surface reveals a combination of growth and decline among degree programs, and the trajectory from past years of enrollment shifting from the MDiv to the MA (both the professional MA and academic MA) continues. Presently, headcount enrollment in the MDiv is projected to be down almost 3% from the previous fall. In the aggregate, professional and academic MA enrollment is projected to be up about 2%.

Fifteen ATS schools have headcount enrollments in excess of 1000 students. The largest school is now Southern Baptist Theological Seminary in Louisville, Kentucky, with a headcount of 3,157, while Fuller Theological Seminary in Pasadena, California, is now second, with a headcount of 2,897. Notably, the overall enrollment figures include the addition of 1,000 students in a certificate program at Biblical Theological Seminary in Hatfield,

Pennsylvania, which represents almost exclusively the overall increase across ATS schools this fall.

Looking longer term, enrollment over the past 10 years has declined by about 5%, despite the addition of almost 20 new member schools during that period. A closer look at the same set of 234 schools from 2008 to 2017 reveals a decline of about 9%.

A summary of the headcount enrollment by degree category for fall 2016 and projected for fall 2017 is shown on the following page. If you have any questions, please contact us at [meinzer@ats.edu](mailto:meinzer@ats.edu) or [brown@ats.edu](mailto:brown@ats.edu).

Projected Change - HC Enrollment - Fall 2017 vs Fall 2016					
	Fall 2016	est. Fall 2017	% Change	Schools UP	Schools DOWN
Total	72,372	73,400	1.4%	50%	50%
MDiv	29,390	28,600	-2.7%	45%	55%
Prof MA	12,413	12,200	-1.7%	55%	45%
Acad MA	10,503	11,200	6.6%	55%	45%
Adv Prof	9,462	9,600	1.5%	60%	40%
Adv Acad	5,888	5,700	-3.2%	50%	50%
Other	4,716	6,100	29.3%	45%	55%

2017 ATS Annual Data Tables



[Chris Meinzer](#) is Senior Director of Administration and CFO and [Eliza Smith Brown](#) is Director, Communications and External Relations, both at The Association of Theological Schools in Pittsburgh, Pennsylvania.

