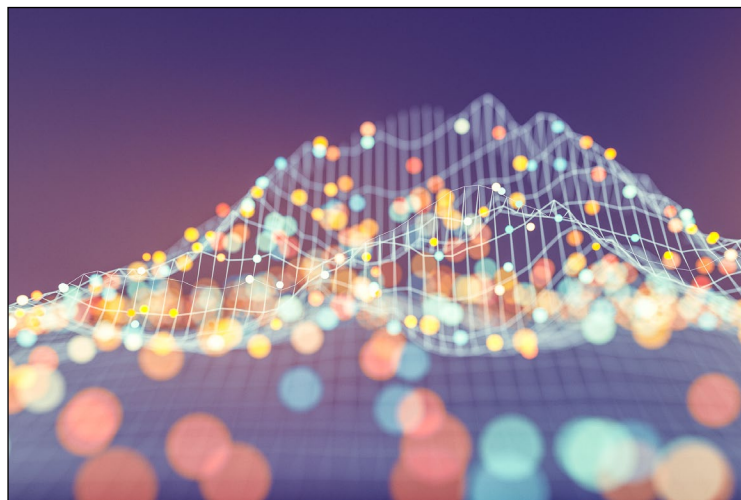


Enrollment projections suggest continued long-term shifts among degree programs

BY CHRIS MEINZER

ATS member schools are finalizing the Annual Report Form (ARF) data collection process. As of the end of November, nearly 240 schools—85% of the membership—had provided enrollment data for fall 2018. Overall, across ATS schools, an increase in total enrollment will occur with the total number of students projected to be about 78,000. As mentioned in last month's Colloquy Online, this increase is due almost exclusively to the addition of ten new member schools. These new schools will add nearly 6,000 students to fall 2018 enrollment figures.



change as the remaining membership reports data. The comparison across the decade shows how enrollment patterns among degree categories have changed. The MDiv represents about 40% of enrollment, and MAs represent about 34% of enrollment in fall 2018. Ten years ago, the MDiv was 43% and MAs were 27% of all students.

Below are the estimated head count numbers for fall 2018, with a comparison to a decade earlier in fall 2009. Please note that the fall 2018 estimates are subject to

Degree Category	Fall 2018, est. Head Count	Fall 2018, est. % of Total Head Count	Fall 2009 Head Count	Fall 2009, est. % of Total Head Count
MDiv	30,900	40%	32,861	43%
Professional MA	13,300	17%	11,104	15%
Academic MA	13,400	17%	9,060	12%
Advanced Professional	9,700	12%	9,480	13%
Advanced Academic	5,900	8%	5,886	8%
Other	4,800	6%	7,109	9%
Total	78,000		75,500	

Note: In fall 2018, ATS will have almost 280 member schools. In fall 2009, there were 251 member schools.

The chart below shows the percentage of schools that have reported enrollment increases so far between fall 2017 and fall 2018. The figures below are updated from October with the most recent membership data. For example, 45% of all ATS schools reported increases in total enrollment, and 48% reported enrollment increases in the MDiv.

The median head count enrollment change among the member schools is also shown for each degree category. Increases in professional MA and academic MA enrollment continue, with each degree category showing a median increase in excess of 4% year over year.

Percent of schools showing enrollment increases from Fall 2017 to Fall 2018

	Schools with HC UP	Schools with HC DOWN	Median HC Change
Total	45%	55%	-2.0%
MDiv	48%	52%	-2.4%
ProfMA	60%	40%	4.0%
AcadMA	60%	40%	4.3%
AdvProf	50%	50%	-0.7%
AdvAcad	46%	54%	-2.6%
Other	44%	56%	-4.6%

ATS hopes to have all enrollment and other annual data collected before the end of December. Allowing for some time to analyze the data collected, the ATS Annual Data Tables, ATS Strategic Information Reports, and ATS Institutional Peer Profile Reports should be made available by early March. If this article generates some strategic questions for your institution or you are interested in placing your school's enrollment in the context of broader ATS trends, please do not hesitate to contact me at meinzer@ats.edu.



Chris Meinzer is Senior Director of Administration and CFO at The Association of Theological Schools in Pittsburgh, Pennsylvania.